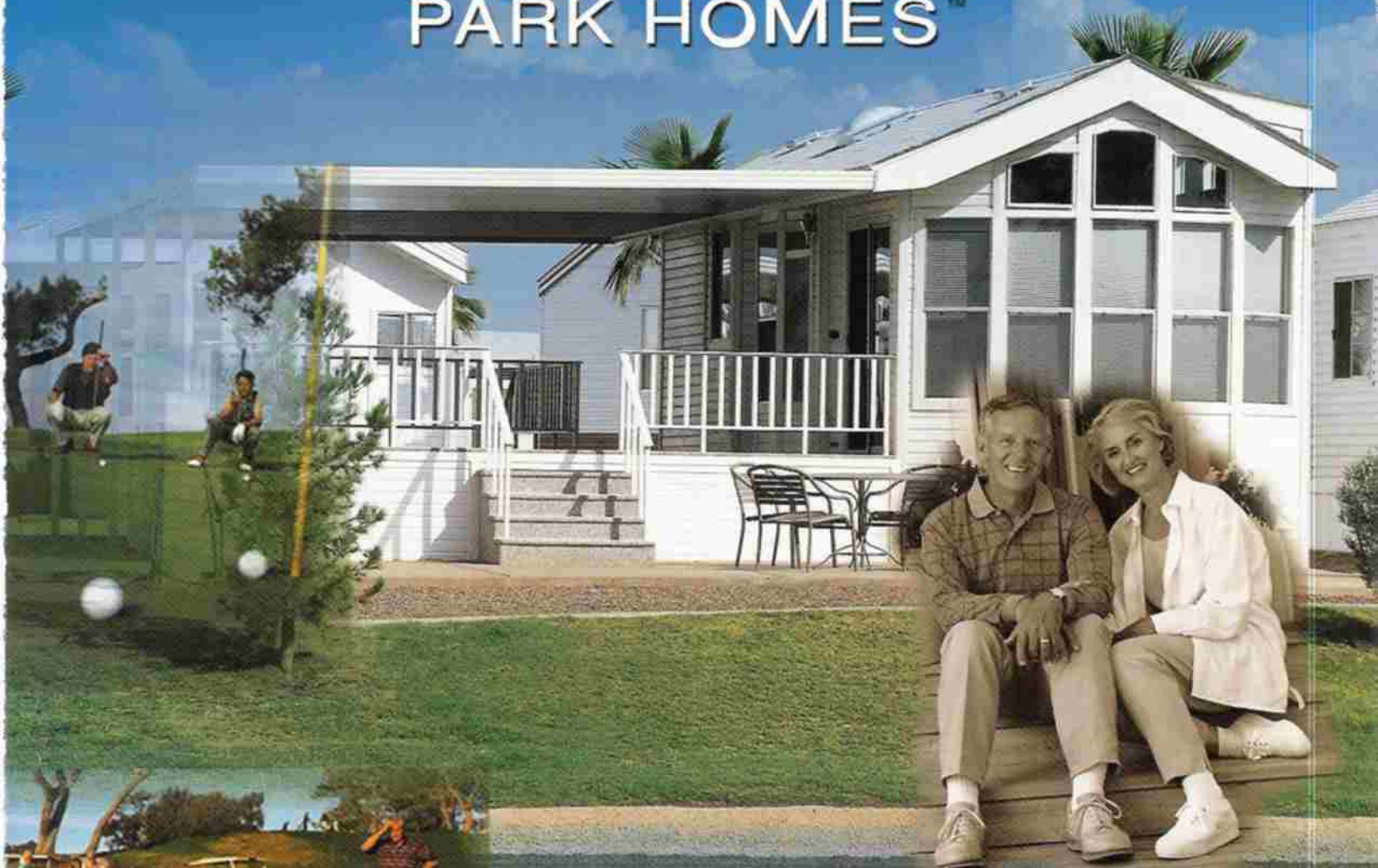




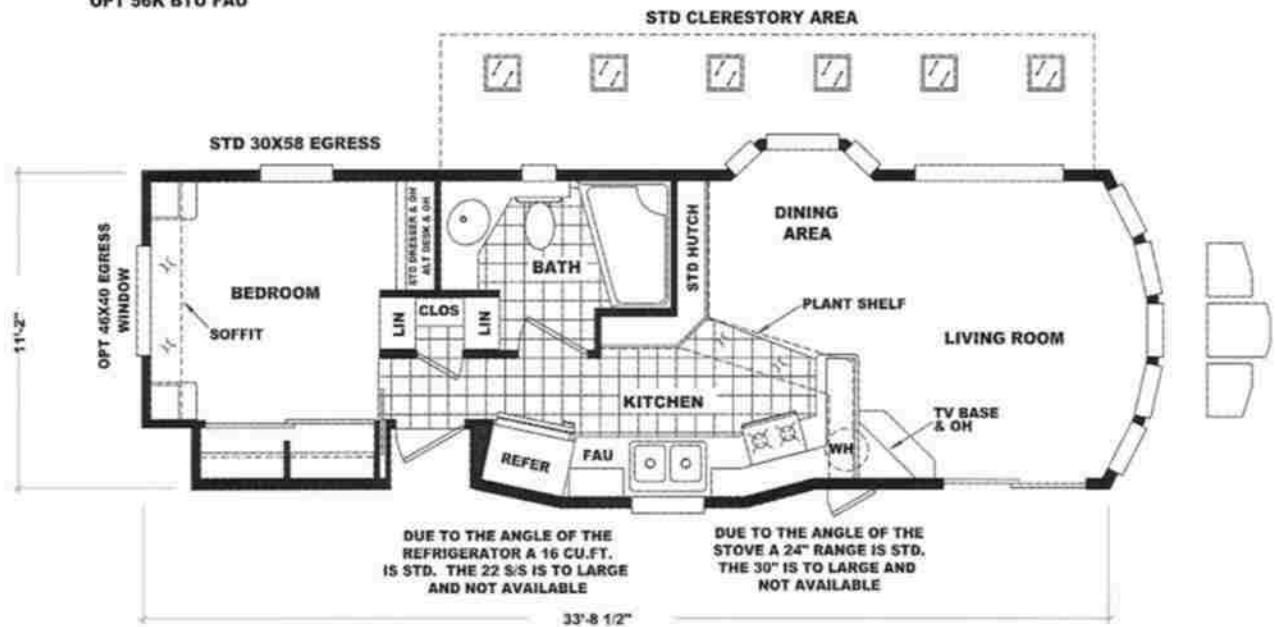
Cavco

PARK HOMES™



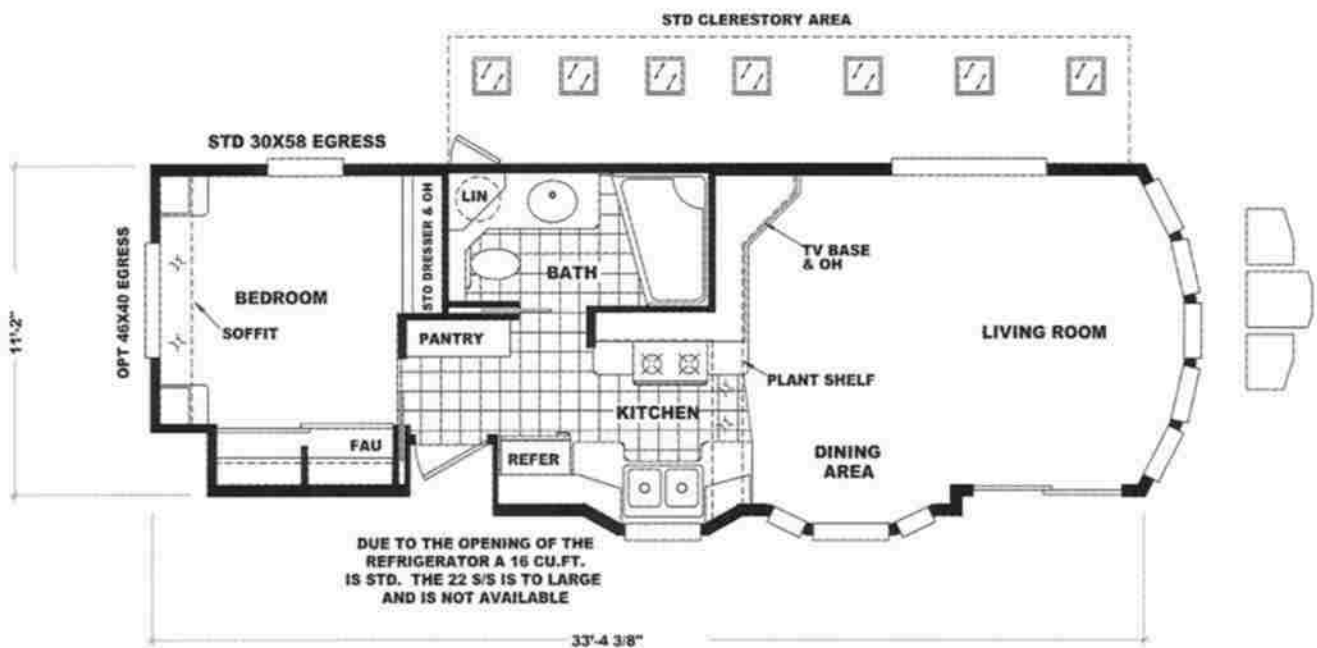
2003 *Elite*

Elite *floorplan options*



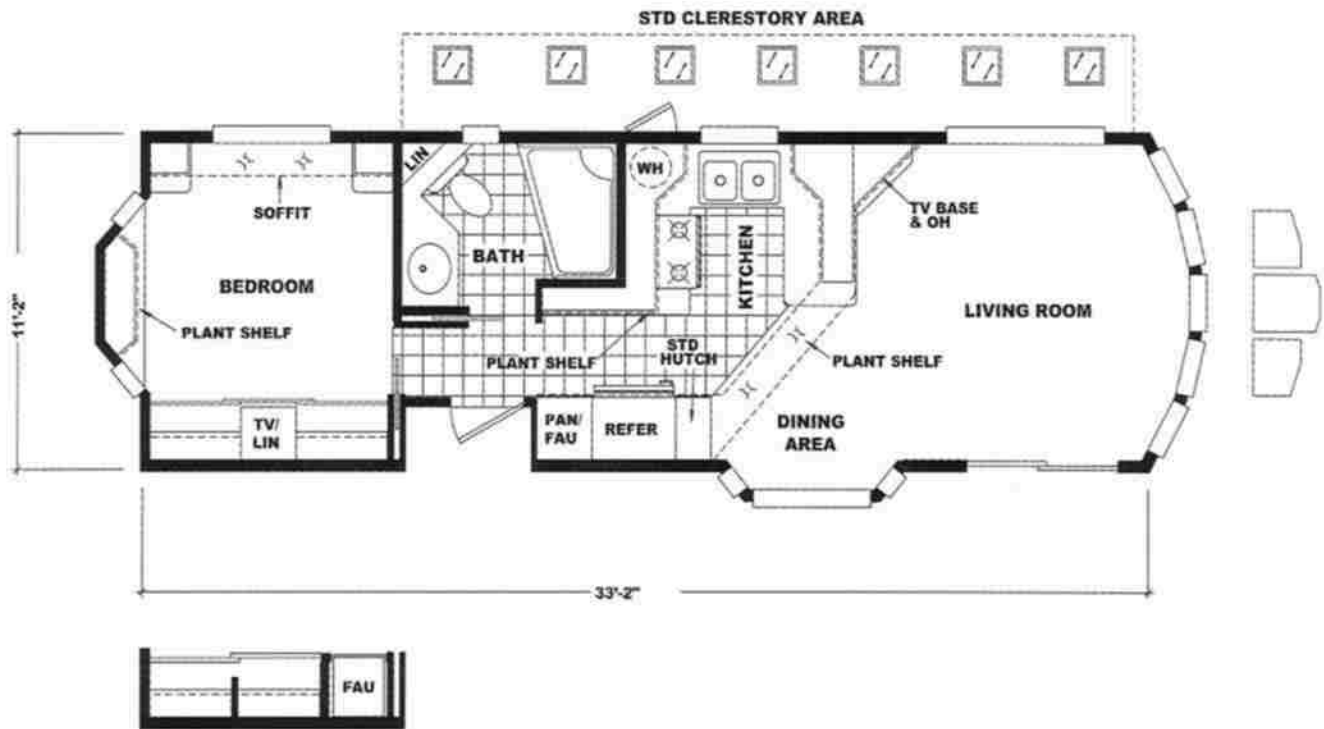
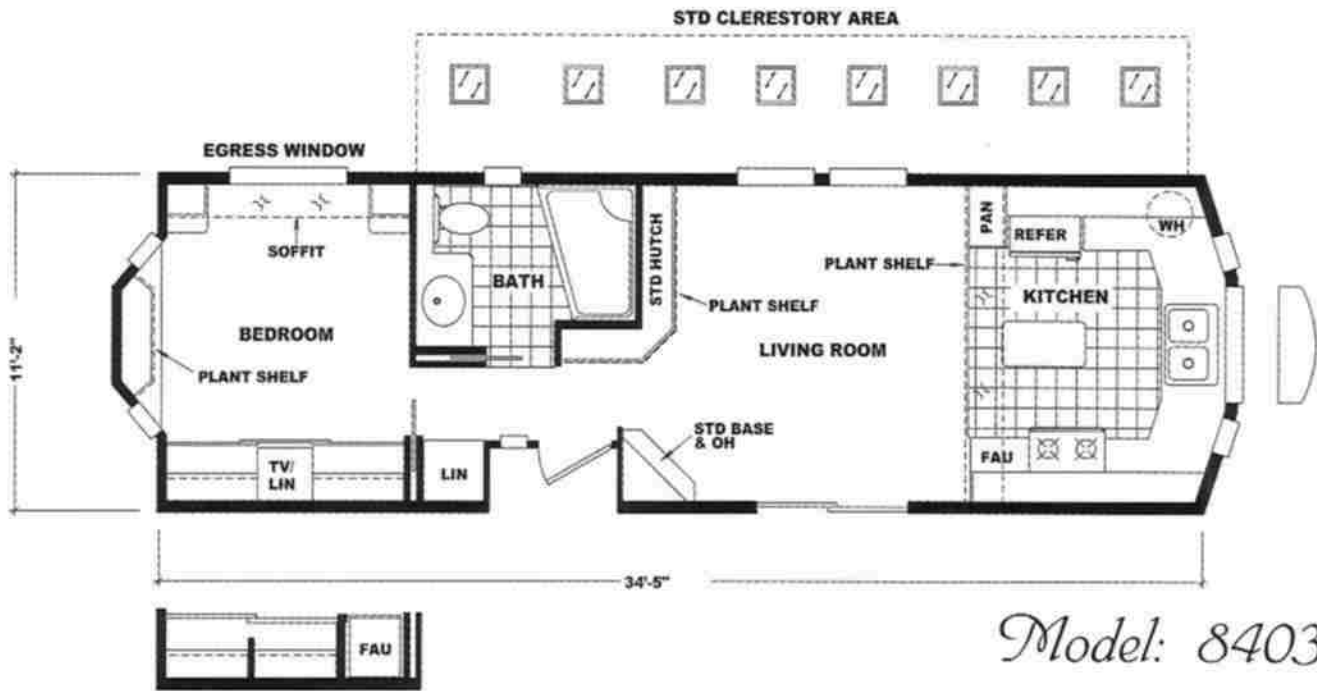
w/16' frost-free refrigerator w/ ice maker and 24" deluxe gas or electric range

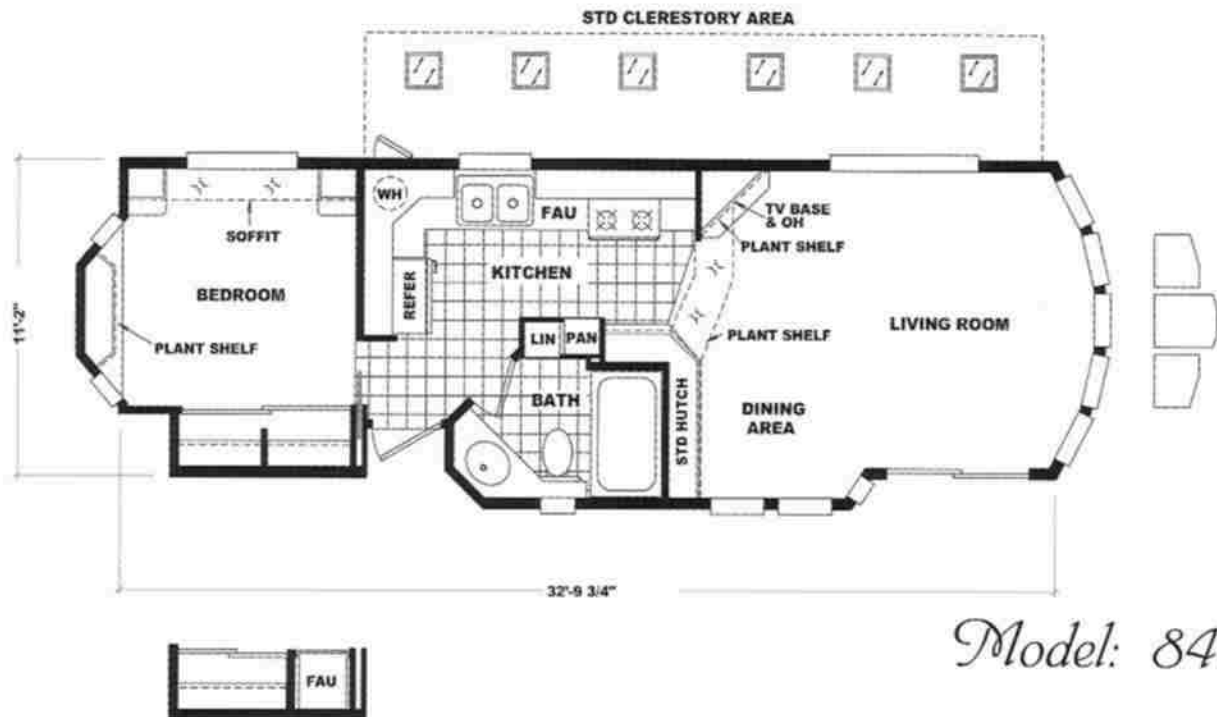
Model: 8401G



w/16' frost-free refrigerator w/ ice maker and 30" self cleaning gas or electric range

Model: 8402A





Model: 8405C

OPT 56K BTU FAU

Elite 2003 Specifications

INTERIOR - Sheetrock Walls and Ceiling with Knockdown Finish Throughout • Cathedral Ceilings Throughout with Clearstory Dormer & Windows • Residential Style Raised Panel White Interior Passage and Pocket Doors with Heavy Duty Hardware • Specially Built Residential Valance Drapes Package • 2" Perma Wood Mini Blinds Throughout (Two Colors) • Name Brand 38 oz. "Shaw" Carpeting with Upgrade Padding and Tack Strip • Choice of Four High Grade "Congoleum" Legacy • Linoleum in Kitchen and Bathroom • Rounded Corner Window Trim Throughout • "Sherwin Williams" Egg Shell Ice White Interior Paint Throughout • Choice of Residential Dining Room Hutch • Upgrade 2003 Residential Style Lighting Package • Smoke Detector and Fire Extinguisher

KITCHEN - G.E. Stainless Steel 30" Self Cleaning Smooth Top Range • G.E. Stainless Steel 22 cu.ft. SS Refrigerator w/ Ice and Water • G.E. Stainless Steel Microwave Oven • G.E. Stainless Steel 24" Residential Dishwasher • Corner Overhead Cabinet Lazy Susan (Per Floorplan) • Solid Hardwood Cabinet Doors, Drawers and Face Frames • Classic Bevel Decor Hutch Door Glass (Per Location) • Choice of Two Woodgrain Cabinet Finishes • Choice of Upgraded Cabinet Pulls • Drawers With Double Steel Roller Guides • High Pressure Laminate Countertops w/ Ceramic Tile Backsplash • Price Pfister Residential Style Pull-Out "Satin" Faucet • Extra Large Composite Kitchen Sink with Garbage Disposal • Choice of Two Colors of Cabinet Door Hinges • Matching Woodgrain Cabinet Interiors w/Adjustable Overheads

BATHROOM - "Lasco" Fiberglass Tub / Shower w/Tip Toe Stopper & Grab Bar • Price Pfister "Satin" Single Lever Lavy Faucet • Price Pfister "Satin" Single Lever Tub Diverter with Shower Head • Satin Tub Enclosure • Single Bank Of Drawers in Base Cabinet (Per Floorplan) • Marble Bowl Lavy Sink • High Pressure Laminate Countertop w/ Ceramic Tile Backsplash • Choice of Upgrade Medicine Cabinet with Light Bar • Built in Linen Cabinet (Per Floorplan) • Satin Towel Bar And Tissue Holder • Bath Exhaust Fan

BEDROOM - Full Width Wardrobe with Mirrored Sliding Doors • Double Drawers Below Wardrobe • Built In Bedroom Cabinets • Two Night Stands • Choice of Soffit w/Recessed Can Lights or "S" Reading Lights

EXTERIOR - Composition Shingled Roof • Baked Enamel Ironwood Yoder Siding Half French Rear Door with Deadbolt • Torch Exterior Lights at Entry Doors and Front Exterior • Choice of White Low "E" Vinyl Framed Dual Glaze Windows with No Grids or White Aluminum Framed Dual Glaze Windows with Grids • Choice of White Aluminum Framed Dual Glaze Sliding Glass Door with or without Grids • Front Eave Overhang • 5- Large Window Front Angled Bay w/Windows Above • Exterior GFI Receptacle by Sliding Glass Door • Exterior Water Heater Door with Easy Access

PLUMBING, ELECTRIC, HEATING & INSULATION - PEX Waterlines with Low Point Drain • U.L. Approved Electrical Devices Throughout • 50 Amp Exterior Main Panel Service with Supply Cord • 20 Gallon Fast Recovery Water Heater with Rocker Off Switch • Easy Touch Rocker Light Switches Throughout • 40,000 BTU Propane Furnace with Auto Ignition • R-14 Fiberglass Floor Insulation • R-11 Fiberglass Sidewall Insulation • R-33 Cellulose Blown Roof Insulation • Black Iron Gas Pipe Ran to Front Hitch End • Aluminum Heat Ducting with Coordinated Floor Registers • Shut-Off Valves Throughout • Pre-Wire for Ceiling Fan in Livingroom and Bedroom • RG6 Coax TV Cable and Jack in Livingroom and Bedroom • 2-Phone Jacks in Livingroom and Bedroom • Dimmer Switch for B-500 Chandelier in Diningroom • 3-Way Bedside Switch • Am/Fm Cassette Stereo with Four Speakers

CONSTRUCTION - Full 8" and 10" I-Beam Chassis Construction • Transverse 2"x6" # 2 or Better Fir Floor Joists 16" O.C. • Detachable Hitch from Main Chassis • Woven Simplex Underbelly Material • 8"x12" High Density Floor Decking • Full Height 7' 6" Sidewalls • 2"x4" Sidewalls 16" O.C. • Pre-Engineered Scissor Trusses 16" O.C. • Nominal 6/12 Pitch Roof • 30 Gauge Steel Strapping for Truss to Sidewall and Floor to Sidewall Strength • RPTIA Approved • ANSI 119.5 Approved

CAVCO SPECIALTY DIVISION / PARK MODELS, CAMPING CABINS, BATH HOUSES & LOFTS
 2602 SOUTH 35TH AVE. PHOENIX ARIZONA 85009 800-622-8260 / 602-484-0171 / FAX 602-484-7953

IMPORTANT: A word about this brochure. We have tried to make this as comprehensive and factual as possible. And we hope you find it helpful. However, since the time of printing some of the information you will find here may have been updated. The right is reserved to make changes at anytime without notice, in prices, colors, materials, specifications and models. Artist renderings and floorplans used on this brochure are not necessarily to scale and may include optional features. Square footage dimensions are based on exterior wall to exterior wall and are an approximate figure. All capacities are approximate and dimensions are nominal. Park Models must be transported by commercial carrier with appropriate permits. See your CAVCO dealer for full details.

WWW.CAVCO.COM

WWW.PARKTRAILER.COM

WWW.CAVCORV.COM